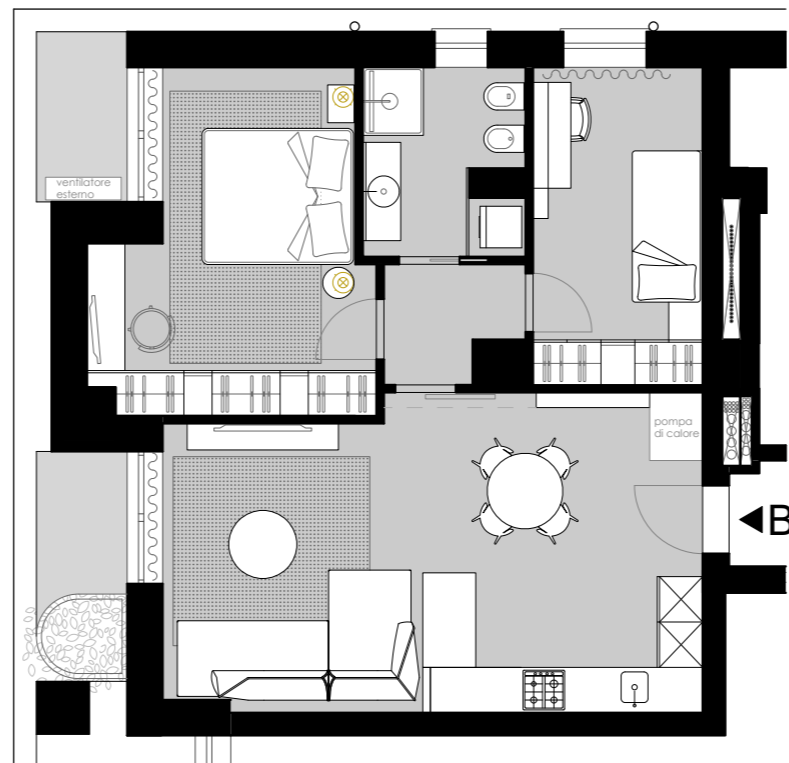


APPARTAMENTO B



PIANO TERRA

Appartamento tipo **B** mq. Commerciali 74.65 + 5 .03 al 50%
mq 2,52balconi

B.1 Ingresso Soggiorno Cucina mq. 28.88

B.2 Disimpegno mq. 2.57

B.3 Bagno mq. 5.08

B.4 Camera Singola mq. 9.43

B.5 Camera Matrimoniale mq. 14.44

